

# CERTIFICATE OF LOCATION OF GOVERNMENT CORNER

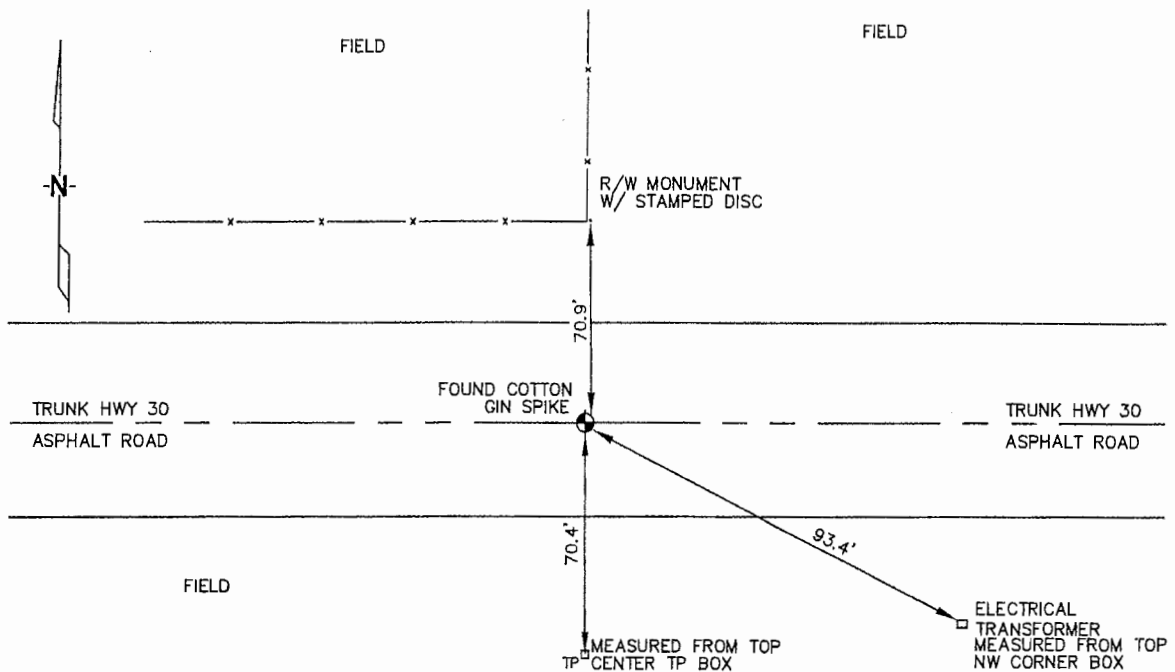
NORTH 1/4 Corner of Section 16, Township 106N, Range 43W, 5TH P.M.

STATE OF MINNESOTA, County of MURRAY

At the corner location shown on the sketch :

- On 3/22/2006 found A "COTTON GIN SPIKE" IN C/L IN T.H. 30 &  
OPPOSITE A FENCE LINE RUNNING NORTH.  
 left monument as found,  lowered monument,  removed monument (explain)
- On \_\_\_\_\_ set \_\_\_\_\_

Sketch of reference ties



N: 696,761.88  
 E: 2,094,691.73  
 MN SOUTH ZONE, NAD 83  
 NOT TO SCALE

Statement of evidence relative to this corner location is on back page

I hereby certify that this document and the data contained herein was prepared by me or under my direct supervision.

Thomas V. Zeff 5/22/06  
 Thomas V. Zeff Date

Registration No. 44563

- Land Surveyor,  Professional Engineer  
 County Surveyor,  County Engineer

OFFICE OF THE COUNTY RECORDER

County of \_\_\_\_\_

SEP 28 2006

I hereby certify that this document was filed in the Co. Recorders office at \_\_\_\_\_ M. on the day of \_\_\_\_\_ A.D., 20

County Recorder James V. Johnson  
 By \_\_\_\_\_, Deputy

DOCUMENT NO. \_\_\_\_\_

STATEMENT OF EVIDENCE:

NORTH 1/4 CORNER, SECTION 16, T. 106 N., R. 43 W.,  
MURRAY COUNTY, MINNESOTA

- 1866 J.W. Bishop, US. Deputy Surveyor, monumented corner.
- ? Date MN DOT R/W Map for Trunk Highway 30, calls for the corner to be at the intersection of the old trunk highway # 47 and fences (east & west), and also on the C/L of line "L".
- 3/22/2006 Ulteig Engineers, inc., Survey Crew, Dennis Lavallie Party Chief, found a "cotton gin spike" in the C/L of Trunk Highway 30, opposite a fence corner with fences running north and west.  
Ties: N-70.9' to R/W monument with stamped disc, near fence corner;  
SE-93.4' to NW corner of electrical transformer box;  
S-70.4' top top, center of telephone pedestal.